



## ***Quick Start Guide***

### ***Sprint Mobile Broadband USB Modem U680***

[www.sprint.com](http://www.sprint.com)

# Table of Contents

<b>Section 1: Setup (Windows).....</b>	<b>4</b>
Connection Manager Software Installation.....	4
One Touch Activation.....	7
Starting a Data Session.....	8
Ending a Data Session.....	8
<b>Section 2: Setup (MAC).....</b>	<b>9</b>
Connection Manager Software Installation.....	9
Launching Connection Manager.....	10
One Touch Activation.....	11
Starting a Data Session.....	11
Ending a Data Session.....	12
<b>Section 3: Setup (LINUX).....</b>	<b>13</b>
<b>Section 4: Installing the Y-Extension cable* .....</b>	<b>14</b>
<b>Section 5: Regulatory Notice.....</b>	<b>15</b>
Safety and Hazards.....	16
<b>Section 6: Manufacturer's Warranty.....</b>	<b>17</b>
Important Notice.....	17

## SECTION 1: SETUP (WINDOWS)

### Note

For MAC OS computers, please go to SECTION 2: SETUP (MAC) on page 9. For LINUX computers, go to SECTION 3: SETUP (LINUX) on page 13.

Before connecting your desktop or laptop computer to the network, you must first install the Connection Manager software on your computer.

### CONNECTION MANAGER SOFTWARE INSTALLATION

(For Windows® 2000, XP and Vista users)

1. Insert U680 USB modem into an USB slot on your computer.



2. The device will appear as a removable storage device *U680\_UMSD* on your computer.
3. There are two LED indicators located on the upper side of the U680 used to indicate the Signal Strength and Status of the modem operation.

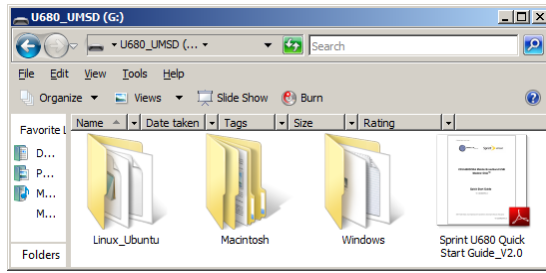
### Tip



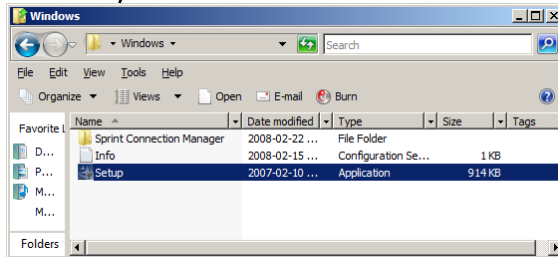
**Signal LED (Red / Green)**  
 - Green Flashing – Good coverage  
 - Red Flashing – Weak Coverage  
 - Red On: No service area

**Mode LED (Blue)**  
 - Off: Idle mode  
 - Blue Flashing: Data Connected: Active  
 - Blue On: Data connected: Dormant

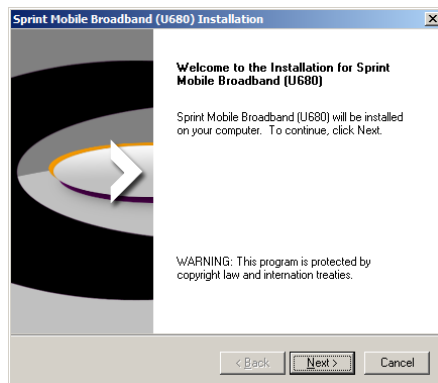
4. Click the Windows file folder to access the installation files directory as shown below.



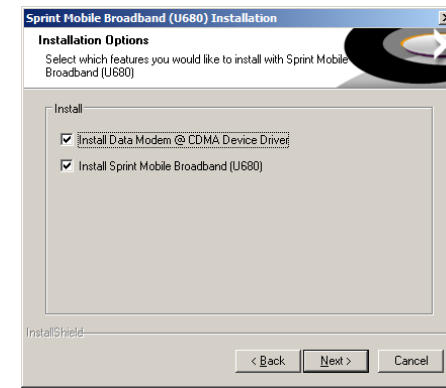
5. Double-click the **Setup.exe** file to start the installation.



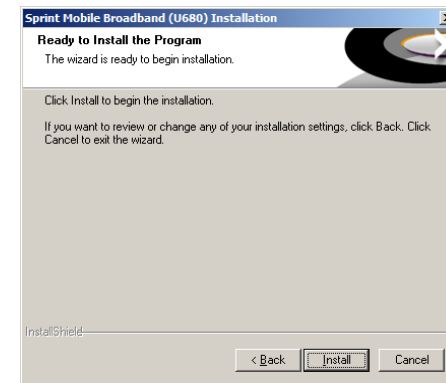
6. Please do the same for other steps where needed throughout this guide.
7. The InstallShield® wizard will launch. Click **Next** to install the software to the default destination folder. To install to a different folder, click **Change** and select the destination folder directory.



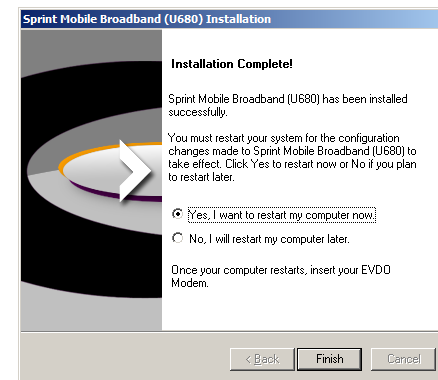
8. Be sure to check both “Device Driver” and “Modem Manager UI,” and then click **Next**.



9. Click **Install** and wait for the installation to complete.



10. Click **Finish**.



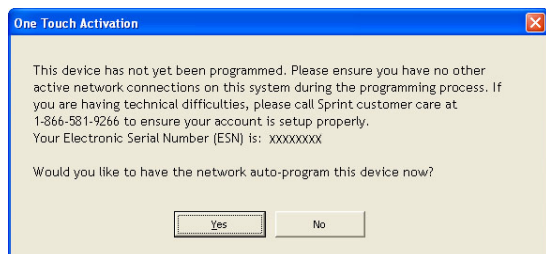
11. Wait for your computer to reboot. You may need to restart your computer manually by selecting **Start > Shutdown > Restart**.

## ONE TOUCH ACTIVATION

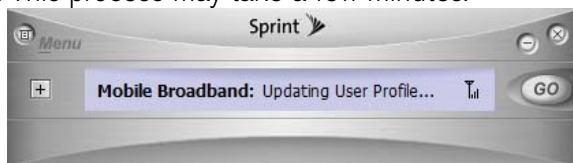
### Auto-programming for Service Activation

Your device must be activated in order to connect to the Sprint network. Connection Manager can activate it for you.

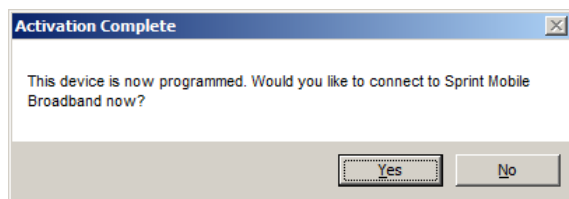
1. Click **Yes** to proceed with One Touch Activation.



2. “**Updating User Profile**” message appears while the device is activating. This process may take a few minutes.




3. After the device has been successfully programmed, click **Yes** to connect to the network, and wait until registration is finished.



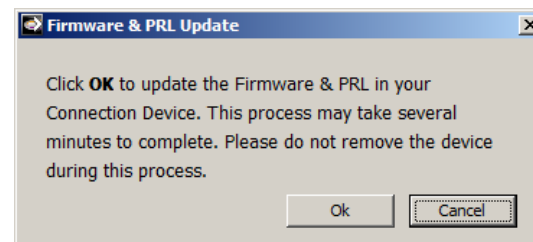
4. When the Welcome Screen appears, click **OK** to continue.



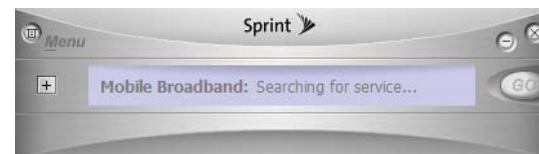
## STARTING A DATA SESSION

1. Double-click the Connection Manager icon  on your computer's desktop to launch the application.
2. Insert the device into a USB slot on your computer. After the device is detected, the modem will go through a series of tasks to prepare the modem for a data session, such as:

- Checking for firmware updates—if the Connection Manager detects that an older firmware version is installed on your device, it will ask if you want to update the firmware. Click **OK** to accept.






- Initializing... and Searching for network service the modem:




3. When the device finds network service, Connection Manager will display a “Disconnected” message, indicating that the device is ready to connect to the network. (If the signal strength indicator is showing a weak signal or if it is not visible at all, move to a different location to find a stronger signal.)



4. Click the “**GO**” button to start a data session. Click the minimize  button to minimize the display and the icon  will appear in the System Tray. To display Connection Manager again, click the  icon in the System Tray.

## ENDING A DATA SESSION

To end a data session, click **STOP**, and then click the  button to close the Connection Manager window. It is now safe to remove the device from your computer.

## SECTION 2: SETUP (MAC)

### CONNECTION MANAGER SOFTWARE INSTALLATION

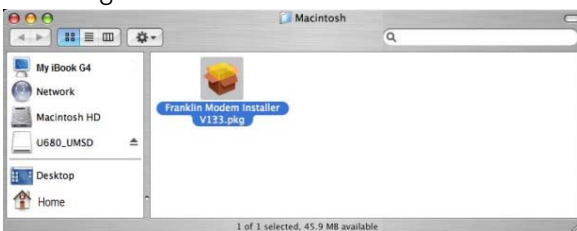
1. Insert the U680 USB modem into the USB slot on your computer.
2. Wait for the USB storage drive icon to appear on your desktop.



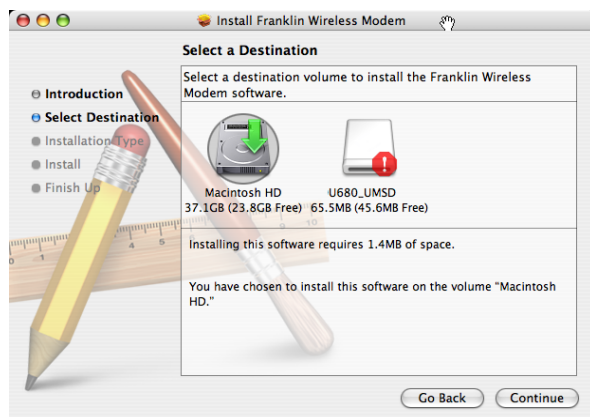
3. Click the USB storage icon, and then click the Macintosh folder.



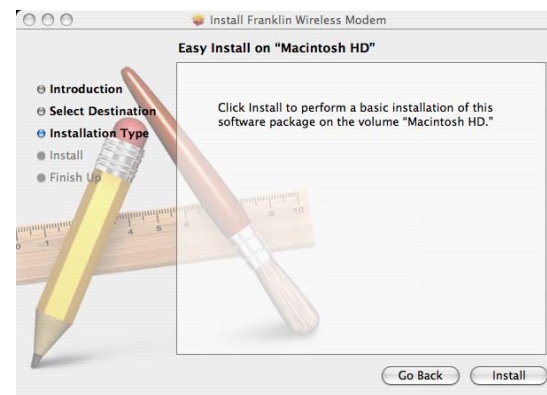
4. Click the “Franklin Modem Installer V133.pkg” icon to begin installing Connection Manager.



5. Click **Continue** on the “Select a Destination” screen




6. Click **Install** on the “Easy Install on ‘Macintosh HD’” screen to proceed.

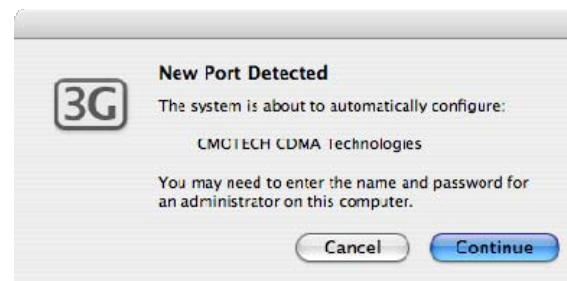


7. When installation is complete, you will be prompted to restart your computer to finish the installation process.

### LAUNCHING CONNECTION MANAGER

1. Insert the device into the USB slot on your computer. After the device is detected, the  icon will be displayed on the taskbar at the upper right hand corner of your desktop, indicating that Connection Manager is launched and ready to connect. Section 2A. Launching Connection Manager

2. Click **Continue** in the “New Port Detected” window to proceed. Enter your password if prompted to do so.

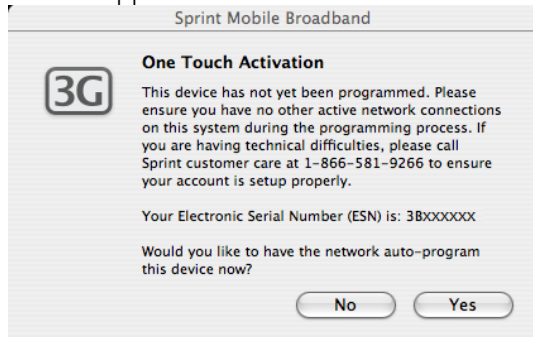


**Note** If your modem has already been activated, please go “**Starting a Data Session**” on page 11.

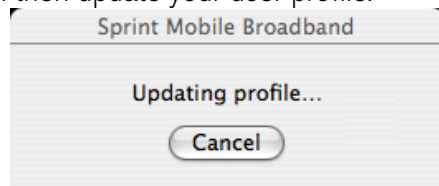
## ONE TOUCH ACTIVATION

### Auto-programming for Service Activation

1. If you are using your USB modem for the first time, a “*One Touch Activation*” screen appears. Click **Yes** to continue.






2. Your device will then update your user profile.

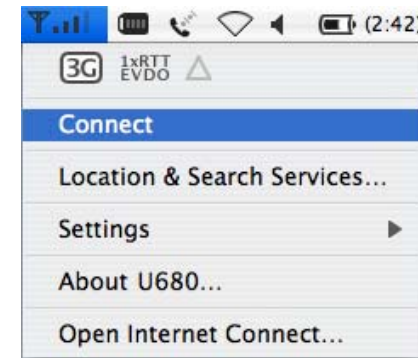


3. After your device has been successfully activated, an “Activation Complete” dialog box will appear. Click **Yes** to connect to the network.

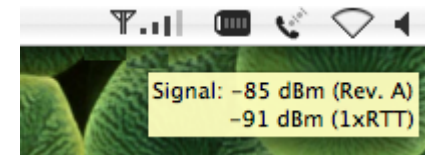


### STARTING A DATA SESSION


1. Insert your device into the USB slot on your computer. Wait for the modem to search for network service in your area. When service is found, the signal strength indicator  appears on the menu bar. (If the signal strength indicator is showing a weak signal or if it is not visible at all, move to a different location to find a stronger signal.)
2. Click the  icon and then select **Connect** to start a data session. When a connection is established, the signal strength indicator  will begin to display the elapsed time from when the connection is made.

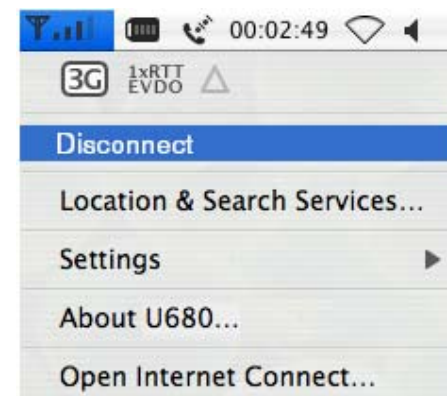


3. The numeric signal strength can be displayed by hovering the cursor over the signal strength indicator.



### ENDING A DATA SESSION

To end a data session, click the signal strength indicator () , and then select **Disconnect**. It is now safe to remove the device from your computer.





## SECTION 3: SETUP (LINUX)

---

*Note: Scripts for Ubuntu Linux distribution are provided. You may need to develop your own scripts for other distributions.*

1. Insert the U680 USB modem into the USB slot on your computer. The device will appear as a removable storage device on your computer.
2. The script files are located under the Linux Ubuntu directory. Copy the whole directory to your desktop.
3. On the *Applications menu*, select *Accessories > Terminal*.
4. Run "*cd Desktop/Linux\_Ubuntu.*"
5. Run "*sudo ./connect.*"
6. Enter the root password. The device will switch to modem mode and attempt to connect.
7. To disconnect, press **CTRL+C** twice.

## SECTION 4: INSTALLING THE Y-EXTENSION CABLE\*

---

Under most operating conditions, your device will operate well when inserted into a single USB slot, and you do not need to install the Y-cable. But in some rare instances your USB modem may require more power to operate due to poor signal strength. When your computer displays a warning message that indicates "USB device has exceeded the power limit," install the Y-cable to supply enough power to the USB modem.

1. Insert the two USB connectors into any two USB slots on your computer.
2. Plug the USB modem into the other end of the Y-cable



(\* U.S. Patents pending by C-motech Co. Ltd. of South Korea)

## SECTION 5: REGULATORY NOTICE

This device is compliant with Parts 15 and 22, 24 of the FCC Rules. Operation of this device is subject to the following two conditions:

1. This device may cause harmful interference, and
2. This device must accept any interference received, including interference that may cause undesirable operation.
3. FCC guidelines stipulate that the antenna should be more than 1.5 cm (0.6”) from all persons.

FCC ID: TARCDU-680

### CAUTION

Unauthorized modifications or changes not expressly approved by Franklin Wireless could void compliance with regulatory rules and thereby your authority to use this equipment.

### WARNING (EMI) – FCC Information

This equipment has been tested and found to comply with the limits pursuant to Part 15 & 22, 24 of the FCC Rules. These limits are designed to provide reasonable protection against harmful interference in an appropriate installation. This equipment generates, uses, and can radiate radio frequency energy and, if not installed and used in accordance with the instructions, may cause harmful interference to radio communication. However, there is no guarantee that interference will not occur in a particular installation.

If this equipment does cause harmful interference to radio or television reception, which can be determined by turning the equipment off and on, the user is encouraged to try to correct the interference by one or more of the following measures:

- Reorient or relocate the receiving antenna.
- Increase the separation between the equipment and receiver.
- Connect the equipment into an outlet on a circuit different from that to which the receiver is connected.
- Consult the dealer or an experienced radio/TV technician for help.

## SAFETY AND HAZARDS

Do not operate modem in areas where blasting is in progress, where explosive atmospheres may be present, near medical equipment, life support equipment, or any equipment which may be susceptible to any form of radio interference. In such areas, the Franklin Wireless U680 1xEV-DO USB modem must be removed from your computer. It can transmit signals that could interfere with this equipment.

Do not operate the Franklin Wireless U680 1xEV-DO USB modem in any aircraft, whether the aircraft is on the ground or in flight. In aircraft, the Franklin Wireless U680 1xEV-DO USB modem must be removed from your computer. When operating, it can transmit signals that could interfere with various onboard systems. The driver or operator of any vehicle should not operate the Franklin Wireless U680 1xEV-DO USB modem while in control of a vehicle. Doing so will detract from the driver or operator's control and operation of that vehicle. In some jurisdictions, operating such communication devices while in control of a vehicle is an offense.



## **SECTION 6: MANUFACTURER'S WARRANTY**

---

### **IMPORTANT NOTICE**

---

Because of the nature of wireless communications, transmission and reception of data can never be guaranteed. Data may be delayed, corrupted (i.e., have errors), or be totally lost. Although significant delays or losses of data are rare when wireless devices such as Franklin Wireless U680 1xEV-DO rev. An USB modem are used in a normal manner with a well-constructed network, they should not be used in situations where failure to transmit or receive data could result in damage of any kind to the user or any other party, including but not limited to personal injury, death, or loss of property. Franklin Wireless, Corp. accepts no responsibility for damages of any kind resulting from delays or errors in data transmitted or received using the Franklin Wireless U680 1xEV-DO USB modem, or for failure of Franklin Wireless U680 1xEV-DO USB modem to transmit or receive such data.

#### ***Manufacturer's Limited one year warranty:***

Franklin Wireless (the company) warrants to original retail purchaser of the product during normal consumer usage conditions, be proven defective in material or workmanship that results in product failure within the first twelve (12) month period from the date of purchase. Such defects will be repaired or replaced (with new or refurbished) product at the Company's discretion, without charge for parts and labor directly related to the defect(s). This warranty extends to consumers who purchase the product in the United States or Canada and it's not transferable or assignable. This warranty does not apply to:

- (a) Product subject to abnormal use or conditions, accident, mishandling, neglect, unauthorized alteration, misuse, improper installation or repair or improper storage;
- (b) Products whose mechanical serial number or electronic serial number has been removed, altered, or defaced;
- (c) Damage from exposure to moisture, humidity, excessive temperature or extreme environment conditions;

- (d) Damage resulting from connection to, or use of any accessory or other product not approved or authorized by the company;
- (e) Defects in appearance, cosmetic, decorative or structural items such as framing and non-operative parts;
- (f) Product damaged from external causes such as fire, flooding, dirt, sand, weather conditions, battery leakage, blown fuse, theft or improper usage of any electrical source.

The Company disclaims liability for removal or reinstallation of the product, for geographic coverage, for inadequate signal reception by the antenna or for communications range or operation of the cellular system as a whole.

When sending your wireless device to Franklin Wireless' authorized distributors for repair or service, please note that any personal data or software stored on the device may be inadvertently erased or altered. Therefore, we strongly recommend you make a back up copy of all data and software contained on your device before submitting it for repair or service. This includes all contact lists, downloads (i.e. third-party software applications, games and graphics) and any other data added to your device. Franklin Wireless is not responsible for and does not guarantee restoration of any third-party software, personal information or memory data contained in, stored on, or integrated with any wireless device, whether under warranty or not, returned to Franklin Wireless' authorized distributors for repair or service. To obtain repairs or replacement within the terms of this Warranty, the product should be delivered with proof of Warranty coverage (e.g. dated bill of sale), the consumer's return address, daytime phone number and/or fax number and complete description of the problem, transportation prepaid, to the Company at the address shown below or to the place of purchase for repair or replacement processing. In addition, for reference to an authorized Warranty station in your area, please call (800) 959-3558 in the United States.

The extent of the company's liability under this warranty is limited to the repair or replacement provided above and, in no event, shall the company's liability exceed the purchase price paid by purchaser for the product.

Any implied warranties, including any implied warranty of merchant ability or fitness for a particular purpose, shall be limited to the duration of this written warranty. Any action for breach of any warranty must be brought within a period of 18 months from date of original purchase in no case shall the company be liable for a special consequential or incidental damages for breach of this or any other warranty, express or implied, whatsoever. The company shall not be liable for the delay in pending

service under this warranty or loss of use during the time the product is being repaired or replaced.

No person or representative is authorized to assume for the Company any liability other than expressed herein in connection with the sale of this product.

Some states or provinces do not allow limitations on how long an implied warranty lasts on the exclusion or limitation of incidental or consequential damage so the above limitation or exclusions may not apply to you. This Warranty gives you specific legal rights, and you may also have other rights, which vary from state to state or province to province.

Franklin's Authorized Service Center Address:

9823 Pacific Heights Blvd. Suite J

San Diego, CA 92121